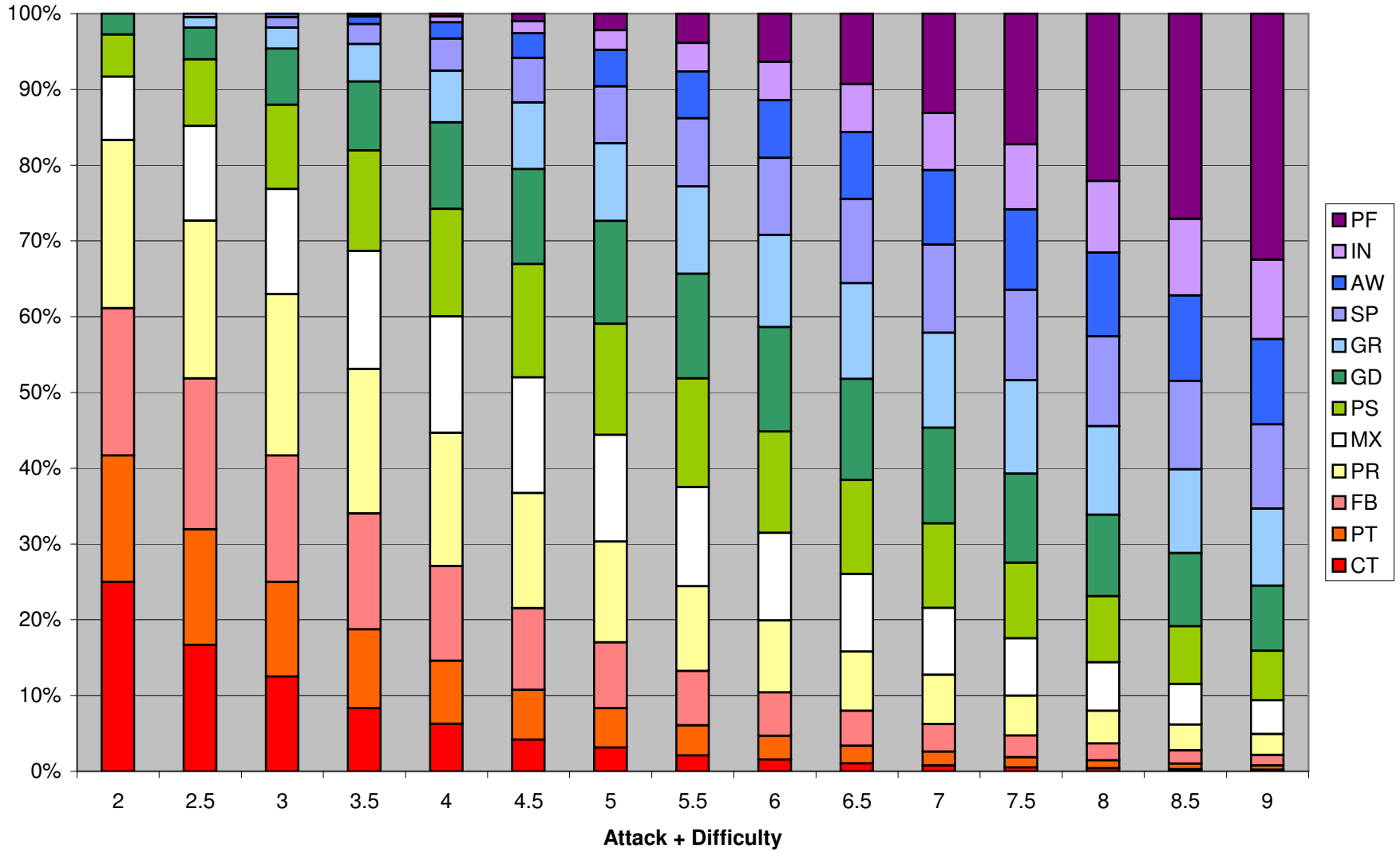
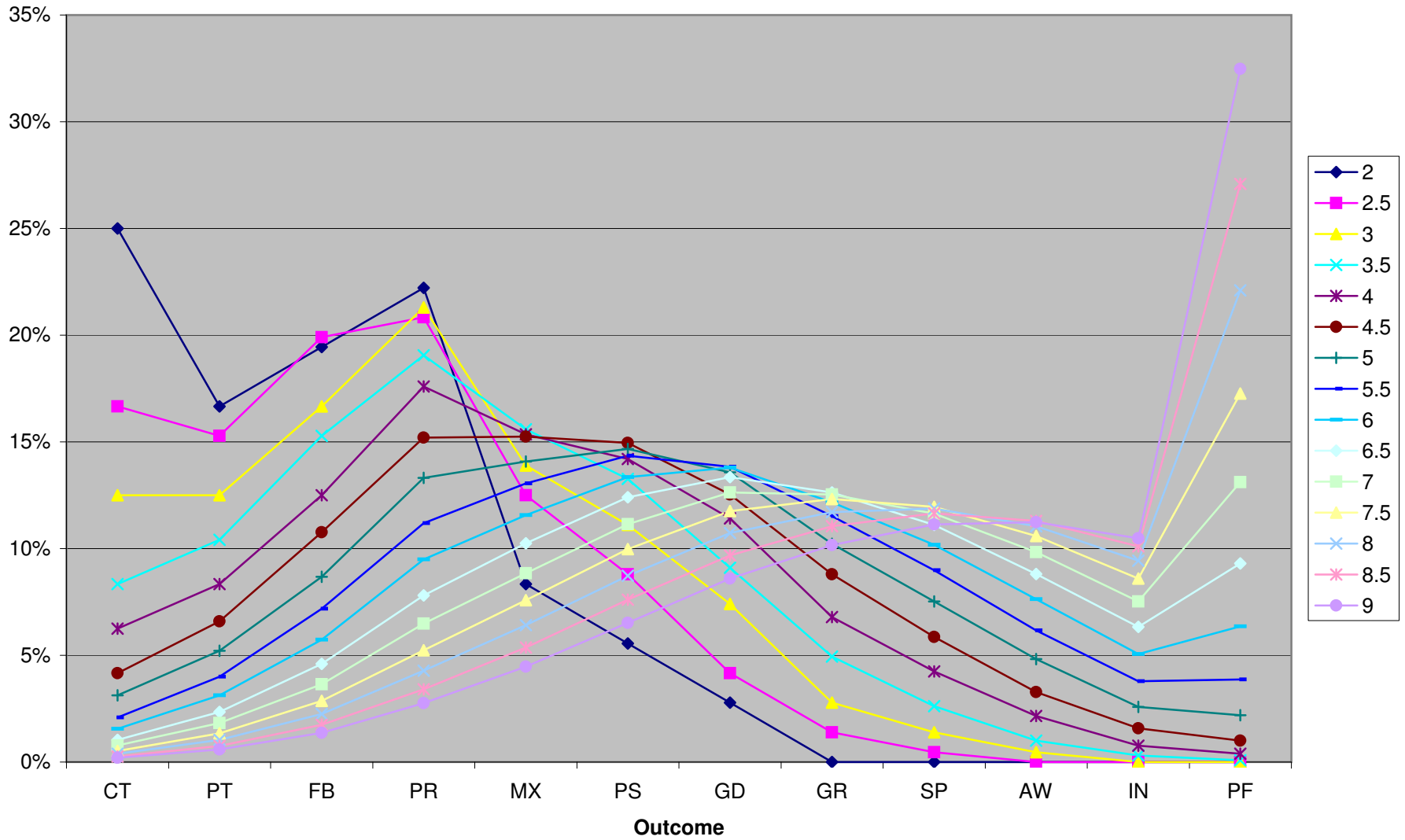


Probability of Outcome



Probability of Outcome



Attribute + Difficulty

	2	2.5	3	3.5	4	4.5	5	5.5	6	6.5	7	7.5	8	8.5	9
CT	25.00%	16.67%	12.50%	8.33%	6.25%	4.17%	3.13%	2.08%	1.56%	1.04%	0.78%	0.52%	0.39%	0.26%	0.20%
PT	16.67%	15.28%	12.50%	10.42%	8.33%	6.60%	5.21%	3.99%	3.13%	2.34%	1.82%	1.35%	1.04%	0.76%	0.59%
FB	19.44%	19.91%	16.67%	15.28%	12.50%	10.76%	8.68%	7.18%	5.73%	4.60%	3.65%	2.86%	2.26%	1.74%	1.37%
PR	22.22%	20.83%	21.30%	19.06%	17.59%	15.20%	13.31%	11.19%	9.49%	7.80%	6.48%	5.23%	4.28%	3.40%	2.76%
MX	8.33%	12.50%	13.89%	15.59%	15.35%	15.25%	14.08%	13.05%	11.57%	10.25%	8.84%	7.58%	6.41%	5.37%	4.47%
PS	5.56%	8.80%	11.11%	13.27%	14.20%	14.96%	14.67%	14.35%	13.35%	12.41%	11.14%	9.98%	8.73%	7.60%	6.52%
GD	2.78%	4.17%	7.41%	9.10%	11.42%	12.54%	13.57%	13.84%	13.79%	13.35%	12.63%	11.75%	10.73%	9.68%	8.60%
GR	0.00%	1.39%	2.78%	4.94%	6.79%	8.80%	10.22%	11.52%	12.17%	12.63%	12.54%	12.32%	11.70%	11.05%	10.16%
SP	0.00%	0.46%	1.39%	2.62%	4.24%	5.86%	7.52%	8.98%	10.17%	11.11%	11.64%	11.95%	11.87%	11.65%	11.13%
AW	0.00%	0.00%	0.46%	1.00%	2.16%	3.28%	4.82%	6.17%	7.63%	8.81%	9.84%	10.59%	11.05%	11.30%	11.24%
IN	0.00%	0.00%	0.00%	0.31%	0.77%	1.58%	2.58%	3.78%	5.05%	6.34%	7.52%	8.59%	9.43%	10.11%	10.49%
PF	0.00%	0.00%	0.00%	0.08%	0.39%	1.00%	2.20%	3.86%	6.35%	9.31%	13.12%	17.27%	22.10%	27.08%	32.48%